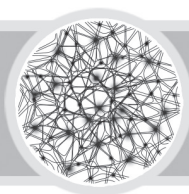


## **order:** A Biblical Vision for Mental Illness

**Vision & Mercy** Psalm 69:20 & Luke 6:36

Pastor Matthew St. John || May 20, 2018



---

### **Discussion Questions**

1. Christians are often at the forefront of bringing healthcare to those in need. What contributes to this reality?
2. Read Psalm 69:20 and Luke 6:36. When have you felt like the psalmist? How have (or could have) others shown you God's mercy in the midst of these times? How can you do likewise?
3. "Mercy" in Luke 6:36 means "tender compassion." Read Matthew 9:27–38 and notice who Jesus focused His mercy on. Jesus saw the people on the margins. He approached them, enjoyed their company and treasured them. How can we ensure that we see the people on the margins? Share specific ideas and stories.
4. What questions do you still have about mental illness? Share them with each other. Then, using James 1:5 for guidance, ask God for wisdom in each of these areas. Ask also for wisdom and compassion in living out the love of Christ.

Check out New Hope Church's community forums on mental illness. Visit [newhopechurchmn.org/messageseries](http://newhopechurchmn.org/messageseries).

Message notes available at [newhopechurchmn.org/messages](http://newhopechurchmn.org/messages).

**May 27** Pastor Matthew St. John